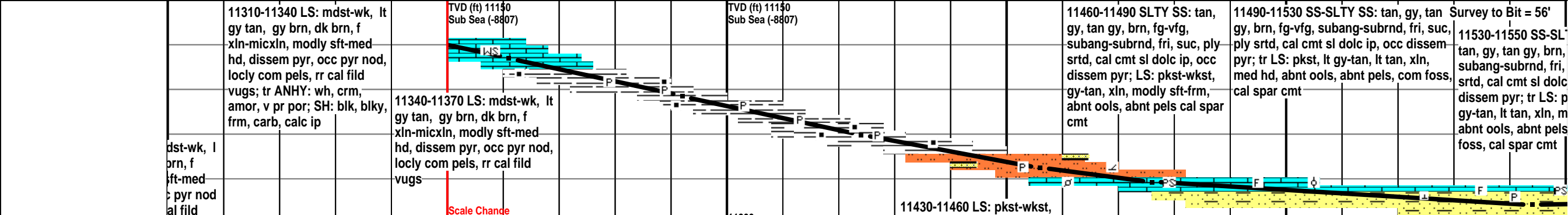
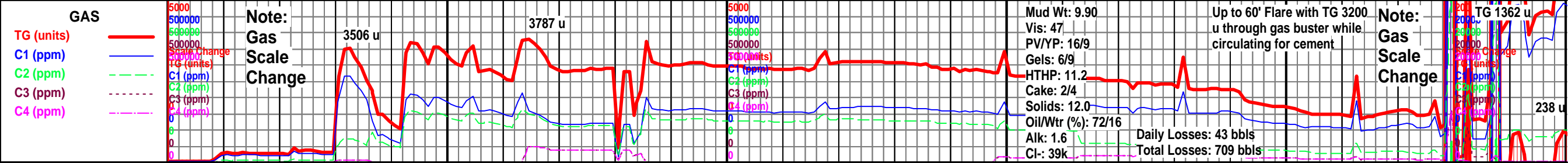
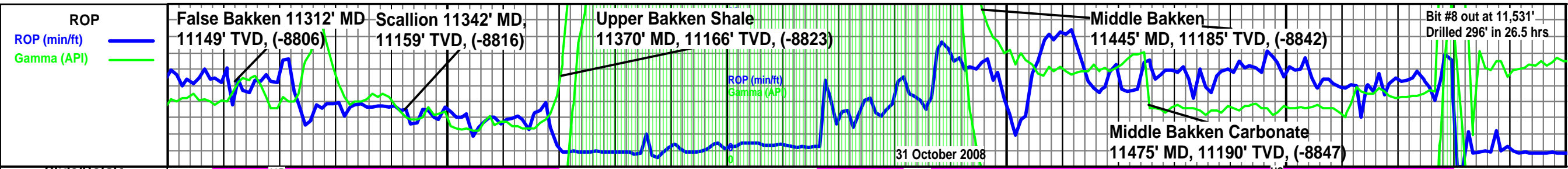


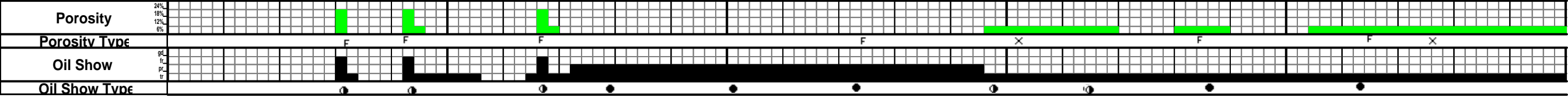
<p>own, tan, very fine friable to firm, visible chry brown oil stain fluorescence, slow cut fluorescence</p>	<p>Dolomite: light to medium brown, tan, very fine, occasionally microsucrosic, firm, very slightly calcareous, rare poor visible intercrystalline porosity, brown oil stain, trace dull blue- white oil fluorescence, fast diffuse blue-white cut fluorescence with a blue white residual ring cut fluorescence</p>	<p>Dolomite: light to medium brown, tan, very fine, occasionally microsucrosic, firm, very slightly calcareous, rare poor visible intercrystalline porosity, brown oil stain, trace dull blue white oil fluorescence, fast diffuse blue-white cut fluorescence with a blue white residual ring cut fluorescence</p>	<p>Limestone: light to medium grey-brown, medium grey, off white, microcrystalline to cryptocrystalline, firm to hard, mudstone to wackestone, dense, moderately argillaceous, pyrite, no visible porosity, pale blue-white oil fluorescence, no cut</p>	<p>Limestone: light to medium grey-brown, medium grey, off white, microcrystalline to cryptocrystalline, firm to hard, mudstone to wackestone, dense, moderately argillaceous, pyrite, no visible porosity, pale blue-white oil fluorescence, no cut</p>	<p>Dolomite: light to medium brown, tan, very fine, occasionally microsucrosic, friable to firm, slightly calcareous, rare poor visible intercrystalline porosity, common patchy brown oil stain, common spotty blue-white oil fluorescence, fast streaming to diffuse blue-white cut fluorescence with a white residual ring cut fluorescence, light brownish-yellow residual oil ring</p>	<p>Dolomite: light to medium brown, tan, very fine, occasionally microsucrosic, friable to firm, slightly calcareous, rare poor visible intercrystalline porosity, common patchy brown oil stain, common spotty blue-white oil fluorescence, fast streaming to diffuse blue-white cut fluorescence with a white residual ring cut fluorescence, light brownish-yellow residual oil ring</p>
--	--	---	--	--	---	---

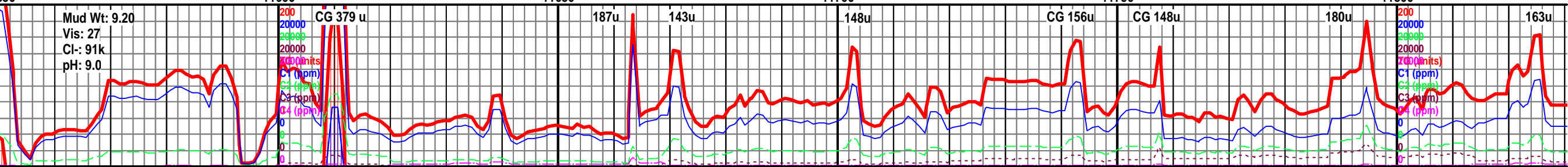
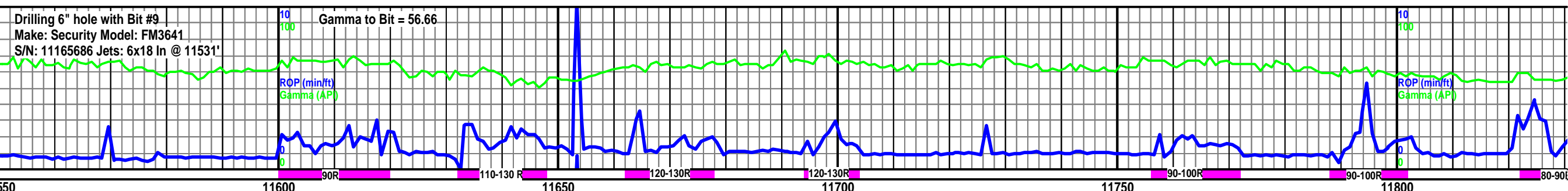
<p>oil in</p>	<p>Samples ground extremely fine</p>		<p>Yellow-green oil in samples and drilling fluid</p>	<p>Out top of pay 11,496' MD 10772.43 TVD</p>	<p>Yellow-green oil in samples and drilling fluid</p>	<p>Re-enter pay 11,611' MD 10772.20 TVD (-8330.20)</p>		
	<p>MD 11412' Inc 91.30 Az 136.50 TVD 10774.32 VS 806.6</p>	<p>MD 11443' Inc 91.10 Az 137.20 TVD 10773.67 VS 836.53</p>	<p>MD 11474' Inc 91.60 Az 136.50 TVD 10772.94 VS 866.47</p>	<p>MD 11505' Inc 92.10 Az 138.60 TVD 10771.94 VS 896.49</p>	<p>MD 11536' Inc 90.40 Az 141.80 TVD 10771.26 VS 926.84</p>	<p>MD 11567' Inc 89.00 Az 143.50 TVD 10771.42 VS 957.44</p>	<p>MD 11598' Inc 89.00 Az 146.40 TVD 10771.96 VS 988.21</p>	<p>MD 11629' Inc 88.90 Az 147.80 TVD 10772.53 VS 1019.10</p>





	MD 11329 Inc 74.45 Az 125.57 TVD 11154.39 VS 336.85	MD 11361 Inc 74.52 Az 124.93 TVD 11162.95 VS 367.28	MD 11392 Inc 73.61 Az 125.93 TVD 11171.46 VS 396.71	MD 11424 Inc 74.82 Az 124.73 TVD 11180.16 VS 427.11	MD 11456 Inc 78.87 Az 125.73 TVD 11187.44 VS 457.85	MD 11476 Inc 81.55 Az 126.28 TVD 11190.84 VS 477.34	MD 11531 Inc 89.8 Az 126.28 TVD 11194.99 VS 531.55
--	---	---	---	---	---	---	--





TY SS:
 fg-vfg, suc, ply ip, occ kst, lt med hd, com

11550-11600 SS-SLTY SS: tan, gy, tan gy, brn, fg-vfg, subang-subrnd, fri, suc, ply srtd, cal cmt sl dolc ip, occ dissem pyr; tr LS: pkst, lt gy-tan, lt tan, xln, med hd, abnt ools, abnt pels, com foss cal spar cmt

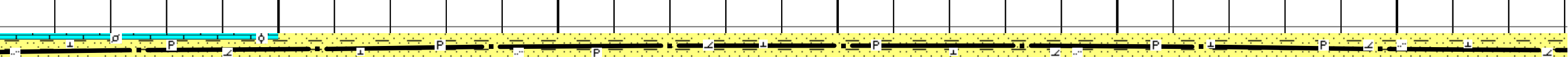
11600-11650 SS-SLTY SS: tan, gy, tan gy, brn, fg-vfg, subang-subrnd, ply srtd, fri, suc, rthy tex, cal cmt sl dolc ip, occ dissem pyr, slw mlky yel wht difse cut flor, yel resid ring cut flor

11650-11700 SS-SLTY SS: tan, gy, tan gy, brn, fg-vfg, subang-subrnd, fri, suc, ply srtd, cal cmt dolc ip, occ dissem pyr, occ nodr pyr, spty brn o stn, slw mlky yel wht difse cut flor, yel resid ring cut flor

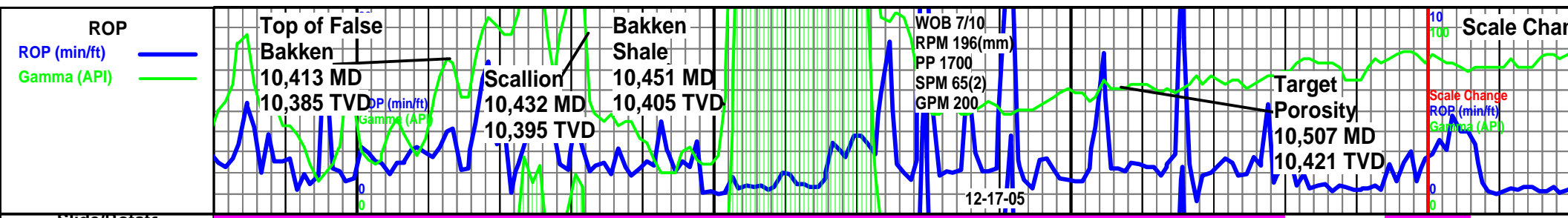
11700-11750 SS-SLTY SS: tan, gy, tan gy, brn, fg-vfg, subang-subrnd, fri, suc, ply srtd, cal cmt dolc ip, occ dissem pyr, occ nodr pyr, spty brn o stn, slw mlky yel wht difse cut flor, yel resid ring cut flor

11750-11800 SLTY SS: off wht, wht, lt gy, lt tan, gy, tan gy, fg-vfg, sft-modly frm, subang-subrnd, ply srtd, fri, suc, rthy tex, cal cmt dolc ip, occ dissem pyr, spty brn o stn, slw mlky yel wht difse cut flor, yel resid ring cut flor

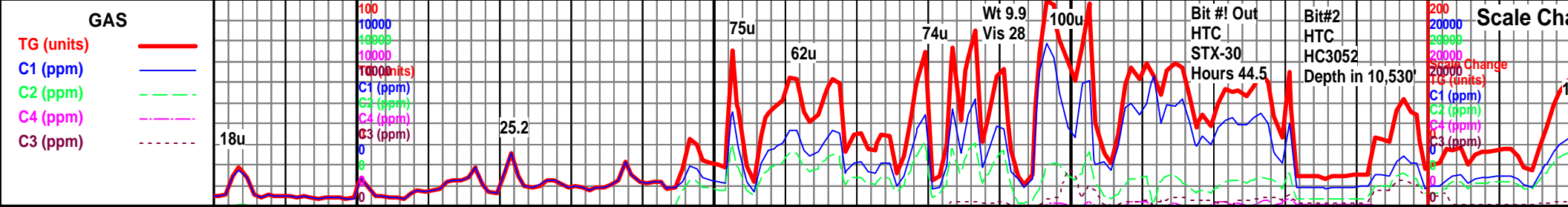
11800-11850 SLTY SS: off wht, wht, lt gy, lt tan, gy, tan gy, fg-vfg, sft-modly frm, subang-subrnd, ply srtd, fri, suc, rthy tex, cal cmt dolc ip, occ dissem pyr, spty brn o stn, slw mlky yel wht difse cut flor, yel resid ring cut flor



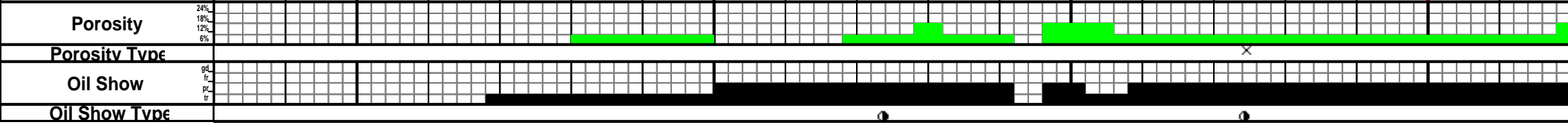
11200 (-8857)		11200 (-8857)		11200 (-8857)		11200 (-8857)		11200 (-8857)		11200 (-8857)		11200 (-8857)	
MD 11544 Inc 90.38 Az 121.83 TVD 11195.63 VS 543.96	MD 11575 Inc 90.69 Az 122.65 TVD 11195.34 VS 574.25	MD 11607 Inc 90.76 Az 123.20 TVD 11194.93 VS 605.59	MD 11638 Inc 90.79 Az 127.32 TVD 11194.51 VS 636.18	MD 11670 Inc 90.24 Az 126.97 TVD 11194.23 VS 667.91	MD 11701 Inc 89.86 Az 128.17 TVD 11194.20 VS 698.68	MD 11733 Inc 89.86 Az 128.18 TVD 11194.28 VS 730.48	MD 11765 Inc 89.35 Az 130.00 TVD 11194.50 VS 762.34	MD 11797 Inc 89.24 Az 131.82 TVD 11194.89 VS 794.27	MD 11827 Inc 89.52 Az 133.90 TVD 11194.90 VS 824.25	MD 11850 Inc 89.52 Az 133.90 TVD 11194.90 VS 824.25	MD 11875 Inc 89.52 Az 133.90 TVD 11194.90 VS 824.25	MD 11900 Inc 89.52 Az 133.90 TVD 11194.90 VS 824.25	MD 11925 Inc 89.52 Az 133.90 TVD 11194.90 VS 824.25

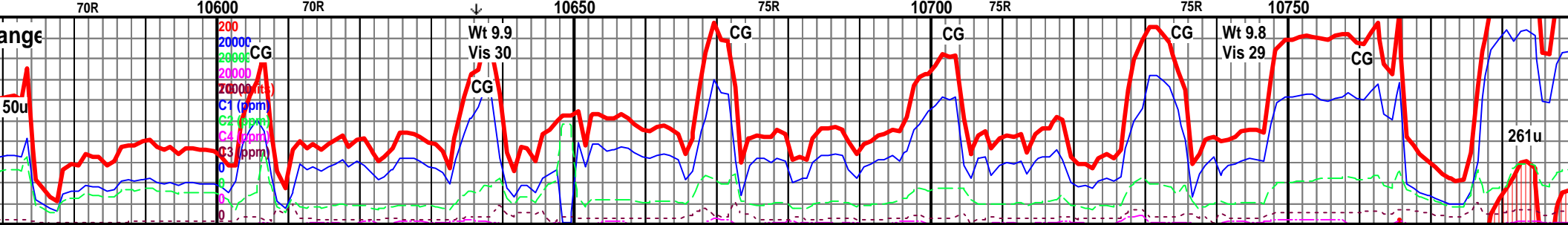
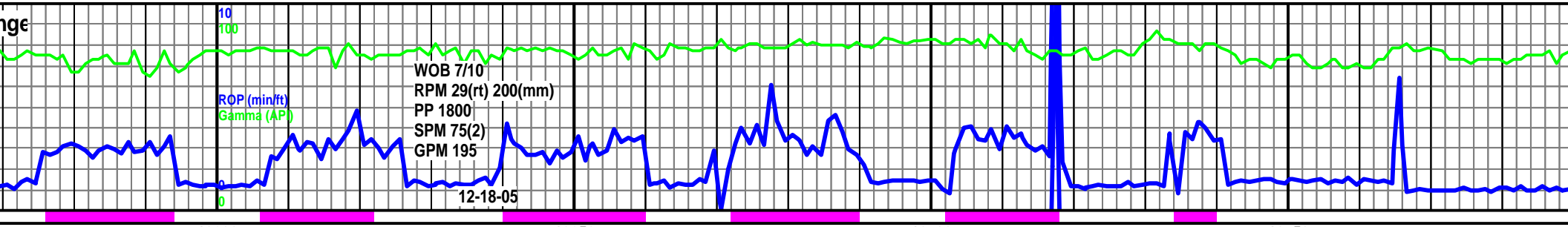


Slide/Rotate Depth



MD 10388 INC 47.10 AZM 280.10 VS 98.87 TVD 10368.91	TVD (ft) 10200 MD 10398 INC 49.80 AZM 282.20 VS 105.58 TVD 10375.54	MD 10408 INC 52.10 AZM 284.70 VS 112.66 TVD 10381.84	MD 10418 INC 54.40 AZM 286.80 VS 120.10 TVD 10387.82	MD 10438 INC 60.20 AZM 288.90 VS 135.94 TVD 10398.64	MD 10458 INC 66.00 AZM 291.00 VS 152.96 TVD 10407.65	MD 10478 INC 72.5 AZM 292.40 VS 170.9 TVD 10414.81	MD 10488 INC 76.20 AZM 294.50 VS 180.24 TVD 10417.50	MD 10508 INC 82.80 AZM 296.60 VS 199.44 TVD 10421.18	MD 10528 INC 87.90 AZM 299.50 VS 219.11 TVD 10422.72	TVD (ft) 10375
cc wckst, lt gy-mer f xln, frm-hd, tr fo: yel dif cut, fs ring cut, spl cor	10390-10413 ARG LS: mdst-tr wckst, wt, lt gy-dk gy, gy brn, tan-lt brn, micxln-vf xln, frm-hd, tr fos frag, no vis por, fst yel dif cut, sl strmg yel cut flour, pa bl resid ring cut, spl con by o up hole, tr oily od	10413-10432 BLK SH: blk, frm, fis, tr py, no vis por, sly calc, no vis o stn, v fst wt diff cut, fst wt str cut	10432-10451 LS: mdst-tr wckst, wt, gy brn, tan-lt brn, micxln-vf xln, frm-hd, tr fos frag, tr spy cal, no vis por, fst pa yel dif cut, v sl strmg yel cut flour, pa bl resid ring cut, spl con by o up hole, tr oily od	10451-10474 BLK SH: blk, frm, fis, tr py, sly carb, no vis por, no vis o stn, v fst wt diff cut, sl wt str cut	10474-10480 LS: mdst-wckst, off wt-lt gy, med gy, vf xln, frm- mod hd, tr fos frags, pr inter xln por, fst diff bl wt cut flour, mod strmg pa yel cut flour, SLTST: gy brn, vf gr, sily dolmtzd	10480-10490 SLTST: aa, DOL, tan-lt brn, vf xln-micxln, fri-frm, suc, tr spty o stn, tr intxln po spty yel min flour, mod diff bl wt cut flour, pa yel resid ring cut	10490-10507 DOL: tan-lt brn, vf xln-micxln, fri-frm suc, tr pels, tr spty o stn, tr intxln por, spty yel min flour, sl-mod diff bl wht cut flour, wt resid ring cut	10507-10550 DOL: tan-med brn, vf xln-micxln, fri-frm, suc, tr spty o stn, tr even o stn, tr intxln por, oily od, spty yel min flour, v fst dif bl wt cut flour, v fst strmg wt cut flour, wt resid ring cut	10550-10600 DOL: fri-frm, suc, tr spty por, oily od, spty yel cut flour, v fst strmg ring cut, dk brn res	
MD 10378 INC 44.20 AZM 278.70 VS 92.57 TVD 10361.92	10500			MD 10428 INC 57.20 AZM 288.20 VS 127.87 TVD 10393.44	MD 10448 INC 63.3 AZM 290.30 VS 144.32 TVD 10403.37	MD 10468 INC 68.8 AZM 291.40 VS 161.82 TVD 10411.49	MD 10498 INC 79.30 AZM 295.20 VS 189.77 TVD 10419.62	MD 10518 INC 85.80 AZM 298.40 VS 209.24 TVD 10422.17		MD 10560 INC 89.30 AZM 301.1 VS 256.87 TVD 10422.17





Oil sheen at shaker	TVD (ft) 10375	Oil sheen at shaker	Oil sheen at shaker	Oil sheen at shaker	Oil sheen at shaker
	10600-10660 DOL: tan-med brn, vf xln-micxln, fri frm, suc, tr spty o stn, tr even o stn, tr intxln por, oily od, spty yel min fluor, v fst diff mlky wt cut fluor, fst-v fst strmg mlky wt cut fluor, sl strmg yel orng cut, wt resid ring cut, brn resid o ring		10660-10690 DOL: tan-med brn, vf xln-micxln, fri frm, suc, tr spty o stn, tr even o stn, occ intxln por, oily od, spty yel min fluor, v fst diff mlky wt cut fluor, v fst strmg mlky wt cut fluor, sl strmg yel orng cut, wt resid ring cut, brn resid o ring		10690-10750 DOL: tan-med brn, vf xln-micxln, fri frm, suc, tr spty o stn, tr even o stn, occ intxln por, oily od, spty yel min fluor, v fst diff mlky wt cut fluor, fst strmg mlky wt cut fluor, sl strmg yel orng cut, wt resid ring cut, brn resid o ring
					10750-10810 DOL: tan-med brn, vf xln-micxln, fri frm, suc, tr spty o stn, tr even o stn, tr intxln por, oily od, spty yel min fluor, v fst diff mlky wt cut fluor, fst strmg mlky wt cut fluor, sl strmg yel orng cut, wt resid ring cut, brn resid o ring

	MD 10598 INC 89.6 AZM 304.00 VS 288.71 TVD 10423.96	MD 10629 INC 90.2 AZM 306.10 VS 319.68 TVD 10424.01	MD 10661 INC 89.5 AZM 309.00 VS 351.67 TVD 10424.10	MD 10693 INC 90.50 AZM 312.00 VS 383.63 TVD 10424.10	MD 10725 INC 91.00 AZM 314.20 VS 415.48 TVD 10423.68	MD 10756 INC 91.30 AZM 315.30 VS 446.23 TVD 10423.06	MD 10781 INC 91.30 AZM 314.00 VS 476.90 TVD 10423.06		

